

# THE NATIONAL MIGRANT SCHOLARS INTERNSHIP INITIATIVE

## 2020 ANNUAL REPORT



THE NATIONAL MIGRANT SCHOLARS  
INTERNSHIP INITIATIVE

OPENING DOORS FOR MIGRANT FARMWORKER STUDENTS



MICHIGAN STATE  
UNIVERSITY

Migrant Student Services



# TABLE OF CONTENTS

---

WORDS FROM OUR DIRECTORS	3
.....	
NMSI STORY	5
.....	
AREA OF EXPERTISE	6
.....	
DEVELOPING STUDENTS INTO PROFESSIONALS	7
.....	
CONNECTING STUDENTS TO EMPLOYERS	8
.....	
STRATEGIC PARTNERSHIPS	9
.....	
DATA	10
.....	
2020 STUDENT INTERNS	12
.....	
NMSI TEAM	14
.....	





## WORDS FROM OUR

# DIRECTORS

---

The year 2020 has been one of growth and learning and has undoubtedly been unprecedented.

We consolidated systems and established new procedures, and served 30 students nationwide. With calm determination, we look at the coming years with hope. Like the rest of the world, we operated in an environment facing a global pandemic and adapted to continue serving Migrant Seasonal Farm Worker (MSFW) students. As we close the year, we have a renewed understanding of the importance of The National Migrant Scholars Internship Initiative (NMSI) and the critical responsibility that is held to get students prepared and into the workforce. We are grateful for every employer that shares our vision and provides opportunities for students of underrepresented backgrounds. Over the past year, NMSI would not have thrived without every member of the NMSI family, each of whom truly contributes to the uniqueness of this initiative. Thank you to Michigan State University, Migrant Student Services, and The National HEP CAMP Association for their partnership. Lastly, a very special thank you to CoBank, whose vision and determination brought NMSI to fruition and continues to support the MSFW community, students, and their families.



**Samantha Velez**  
Associate Director

**Luis A. Garcia**  
Director



# MISSION STATEMENT

To support the College Assistance Migrant Program (CAMP) students nationwide to make internship opportunities possible

# PURPOSE

To encourage and support CAMP students in finding experiential learning opportunities that will prepare them for future careers

# VISION

To increase the representation of a diverse labor force in the United States

SUPPORTING STUDENTS WITH RESOURCES TO ENHANCE  
AND ESTABLISH INTERNSHIP

# OPPORTUNITIES

NMSI supports internships and employment opportunities for MSFW students, and ensures they have the skills and tools necessary to be more successful after they graduate. NMSI provides tailored services that facilitate equal representation in the workforce and offers professional development opportunities by enhancing professional communication in interviews, and by building high-quality resumes and cover letters.

# OUR STORY

## ... ABOUT NMSI

---

The **National Migrant Scholars Internship Initiative** advocates for adaptive hiring practices that support MSFW students who have participated in CAMP. NMSI facilitates the connection between students and employers and provides a pool of student candidates to employers. Additionally, NMSI identifies potential financial burdens that students may encounter during their internship and develops an Employer Agreement that directly supports the student.

The **College Assistance Migrant Program (CAMP)** is federally funded through the U.S. Department of Education, Office of Migrant Education. CAMP assists students who are migratory or seasonal farmworkers (or children of such workers) enrolled in their first year of undergraduate studies at an Institution of Higher Education. The funding supports the completion of the first year of studies. The program serves approximately 2,000 CAMP participants annually.

Since 2015, **CoBank** has generously supported NMSI and the dynamic practices that lead to the securement of internships and professional development for MSFW students.



# OUR MAIN AREA OF EXPERTISE

Creating experiences for students that enhance the diversity in the labor force of the United States



Photograph taken before the current health crisis

## INTERNSHIPS

To provide direct access to internship opportunities by connecting NMSI participants to employers that are seeking to enhance diversity

## MATCH

To facilitate the connection between students and employers

## LEARNING OUTCOME

To ensure a learning outcome and quality internship by completing an individualized pre- and post-learning agreement with the employer and student

## EQUITABLE SUPPORT

To advocate for adaptive hiring practices that are inclusive of all

## DEVELOPING STUDENTS INTO

# PROFESSIONALS

## BREAKING BARRIERS

NMSI's focus is on three supportive areas that target financial, experiential learning, and professional development. NMSI's **Financial** support alleviates and removes financial barriers that MSFW students face during an internship. NMSI guarantees a **Learning** outcome that provides hands-on experience that will ultimately support their competitiveness in the workforce upon graduation. For preparation, NMSI provides **Professional Development** workshops that cater to the MSFW student population.



### FINANCIAL SUPPORT

A well-functioning financial support system promotes creativity, innovation, and inclusive personal growth.



### EXPERIENTIAL LEARNING

Students have the opportunity to develop and apply the skills, theories and concepts learned in the classroom.



### PROFESSIONAL DEVELOPMENT

Professional development is learning to maintain professional skills through formal workshops.



Photograph taken before the current health crisis

# CONNECTING STUDENTS TO EMPLOYERS

## WE DO THE RECRUITING, SO YOU DON'T HAVE TO

---

- NMSI facilitates the connection between students and employers
- Access to a pool of diverse student candidates to meet employers' hiring requirements
- Financial resources to offset the cost of an internship
- Supportive resources to create and maintain an inclusive and equitable work environment





# STRATEGIC PARTNERSHIPS



**Robinson Elementary School**  
A Hillsborough County Public School



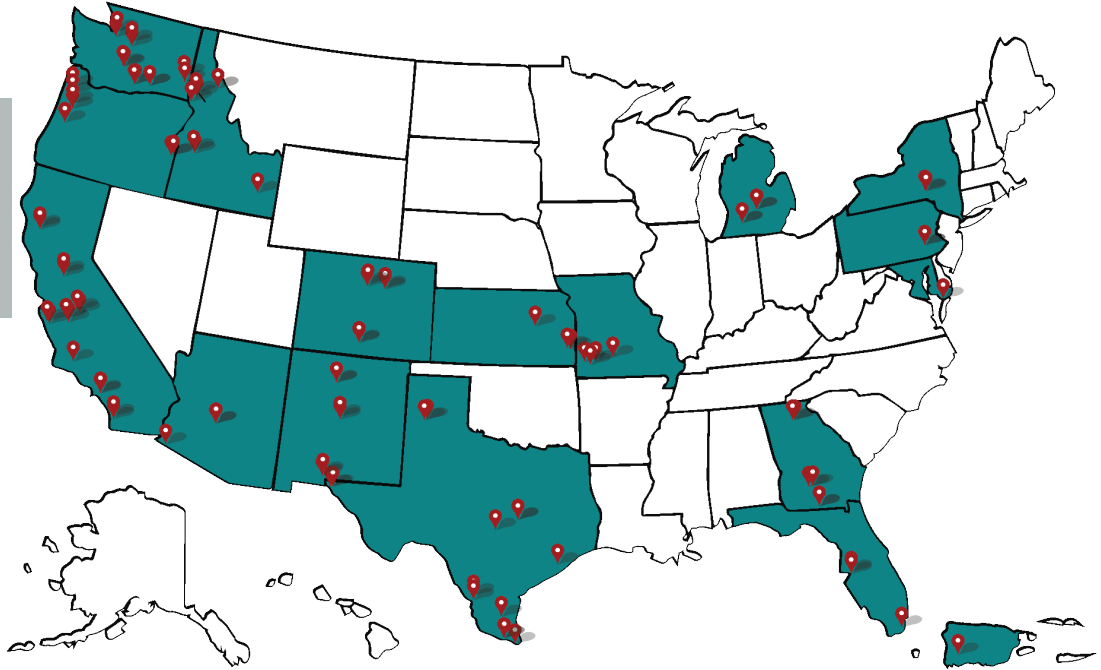
\$, Dollar Bar Ranch



DATA

**56**  
CAMP Programs

CAMP PROGRAMS WE SERVE



Locations of current CAMP Programs

**The Western Migrant Stream**

- Arizona State University
- Arizona Western College
- California State University, Bakersfield
- California State University, Fresno
- California State University, Long Beach
- California State University, Monterey Bay
- California State University, Sacramento
- California State University, San Marcos
- Mendocino College
- Rancho Santiago Community College
- Chemeketa Community College
- Oregon State University
- Portland Community College
- Treasure Valley Community College
- Central Washington University
- Columbia Basin College
- Eastern Washington University
- Heritage University
- University of Washington
- Washington State University
- Wenatchee Valley College
- West Hills Community College
- Yakima Valley College

**The Central Migrant Stream**

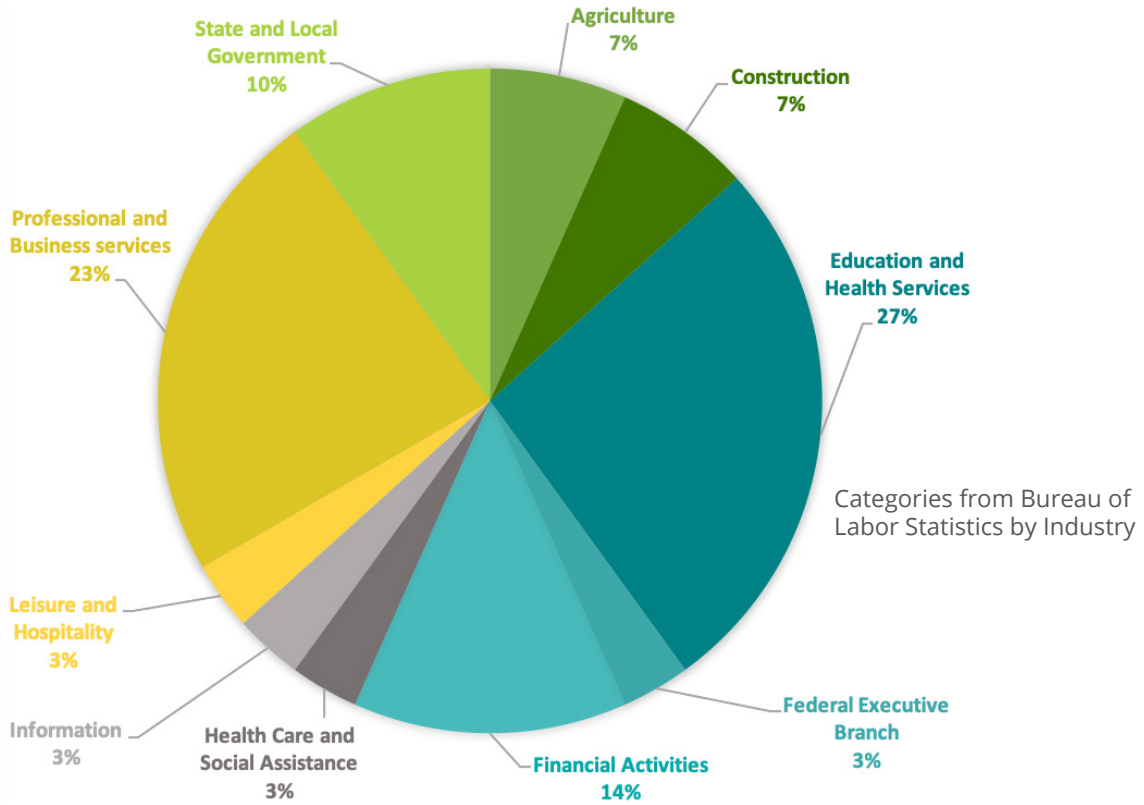
- Adams State University
- Metropolitan State University of Denver
- University of Colorado Boulder
- Boise State University
- Lewis Clark State College
- University of Idaho
- Fort Scott Community College
- Kansas State University
- University of Kansas, Heartland
- New Mexico State University
- Northern New Mexico College
- University of New Mexico
- El Paso Community College
- St. Edward's University
- Texas A&M International University
- University of Houston
- University of Texas at El Paso
- University of Texas Rio Grande Valley, Brownsville
- University of Texas Rio Grande Valley, Edinburg
- West Texas A&M University

**The Eastern Migrant Stream**

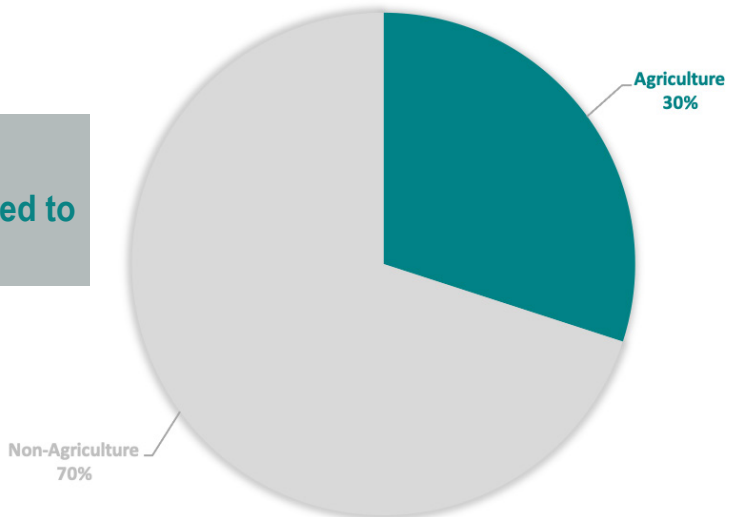
- Miami Dade College
- University of South Florida
- Abraham Baldwin Agricultural College
- University of North Georgia
- Valdosta State University
- Salisbury University
- Michigan State University
- Western Michigan University
- Crowder College
- Drury University
- SUNY Oneonta
- Millersville University of Pennsylvania
- Inter American University of Puerto Rico

# DATA

# 30 Internships



**30%**  
of NMSI Internships are related to  
**Agriculture**



# 148 Internships total from 2015-2020

# 2020 STUDENT INTERNS



**Leobardo Vallejo**  
Michigan State University  
District Office of  
Congresswoman Elissa Slotkin



**Rebeca Sanchez Celaya**  
SUNY Oneonta  
Access and Opportunity Program,  
SUNY Oneonta



**Daniel Luquin**  
Washington State University  
Yakima Chief Ranches



**Dora Cortave**  
SUNY Oneonta  
Access and Opportunity Program,  
SUNY Oneonta



**Esmeralda Suarez**  
Michigan State University  
CoBank



**Jose Torres-Arellano**  
Washington State University  
Kraemer North America



**Damaris Chavez**  
Michigan State University  
YMCA



**Jesus Salamanca-Zepeda**  
Washington State University  
Stemilt Ag Services



**Joan Ramos**  
University of New Mexico  
Dwellevate



**Alexandra Rodriguez**  
Michigan State University  
District Office of  
Congresswoman Elissa Slotkin



**Leonor Perez**  
University of South Florida  
Robinson Elementary School



**Clarissa Mezquitic**  
Michigan State University  
Office of Rep. Kevin Hertell



**Florencia Perales**  
Michigan State University  
YMCA



**Michelle Abigail Herrera**  
Western Michigan University  
HOMTV



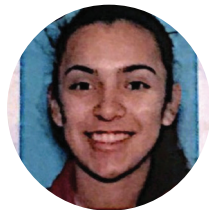
**Valeria Moreno**  
St. Edwards University  
CoBank



**Lorena Jaimes-Salinas**  
Western Michigan University  
Milwood Magnet Middle School,  
Kalamazoo Public Schools



**Arlett Torres Rodriguez**  
Washington State University  
Bicoastal MGMT



**Melissa Guadarrama**  
University of Washington  
Central Washington Justice  
for our Neighbors



**Jessica Gonzalez-Ayala**  
Western Michigan University  
Michigan Department of Health  
and Human Services



**Eric Solis**  
Michigan State University  
Office of Cultural & Academic Transitions,  
Michigan State University



# 2020 STUDENT INTERNS



**Graciela Cervantes**  
University of South Florida  
Cannella Elementary School

Ms. Cervantes is a Senior studying Elementary Education with an emphasis on English for Speakers of Other Languages (ESOL) and reading. Ms. Cervantes earned an internship at Cannella Elementary School in Florida, where she was able to connect theory and practice. During this period, she learned to structure, organize, and create better lessons for her students.



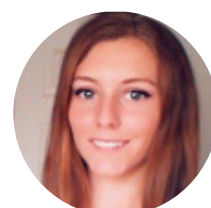
**Alberto Cruz Jr.**  
Michigan State University  
CoBank

Mr. Cruz is a Senior studying Human Resources. Early in his life, his family migrated to Michigan to cultivate asparagus, and he learned the true value of hard work and determination. Alberto was selected to intern at CoBank in Colorado in the Human Resources department. During his time there, he gained valuable experience in diversity and inclusion.



**Chayse Stevens**  
State University of New York  
U.S Dept. of Migrant Education

Mr. Stevens is a Senior studying Political Science. His experience as a farmworker taught him to work and to achieve his goals. Growing up, he often assisted in translating from one language to another. These experiences led him to be patient and emphatic. He also developed a passion for helping others and aided him in choosing his professional career. He is currently an intern in the U.S Department of Education, Office of Migrant Education.



**Erica Proudfoot**  
University of New Mexico  
Dollar Bar Ranch

Ms. Proudfoot is a Junior studying Marketing. Her farmworker story started when she was a child tending to crop in Ohio. In high school, she decided to raise chickens and sell their eggs. This was when she realized she had a talent for business. The internship experience she had at Dollar Bar Ranch was the exact work she was looking for post-college. This experience taught her marketing skills and confidence when filling out financial and operating documents.



**Stefanie Pedraza**  
University of Georgia  
Homestar Financial Corporation

Ms. Pedraza is a Senior studying Business Administration. She was born and raised in Mexico until her family decided to move to the United States to pursue a better life. Since she was little, she had a passion for numbers, and her goal is to work in Real Estate or Finance. Through NMSI, she interned at Homestar Financial Corporation. This experience opened other doors for her, such as receiving an offer from Freddie Mac as a Capital Markets Analyst.

## A FEW MORE STUDENTS

---

Guadalupe Perales, Michigan State University, Migrant Legal Aid | Keziah Ramm, SUNY Oneonta, Sodexo | Areli Cardenas, Michigan State University, DTE Energy | Santos Lopez, Michigan State University, DTE Energy | Leobardo Vallejo, Michigan State University, MIRC



# NMSI TEAM

---



**Luis Alonzo Garcia**  
Director



**Samantha Velez**  
Associate Director



**Michael A. Suarez**  
Communications Coordinator



**Zainab Ascencio Camac**  
Administrative Assistant



**Cesar Reyes**  
Student Assistant





ASSISTING IN PROFESSIONAL GROWTH FOR  
**CAMP STUDENTS**

*Financial Support, Experiential Learning, Professional Development.*





NMSI interns throughout the years

## LET'S STAY CONNECTED



@NMSI\_CAMP



The National Migrant Scholar  
Internship Initiative



@NMSI MSU

Holden Hall C-235  
234 Wilson Rd.  
East Lansing, MI 48825

Phone: (517) 432-4476  
E-mail: [nmsi@vps.msu.edu](mailto:nmsi@vps.msu.edu)  
Website: [mss.msu.edu](http://mss.msu.edu)