

THE NATIONAL MIGRANT SCHOLARS
INTERNSHIP INITIATIVE

ANNUAL REPORT

DECEMBER 2022



OPENING DOORS FOR MIGRANT FARMWORKER STUDENTS



MICHIGAN STATE
UNIVERSITY

Migrant Student Services



WORDS FROM OUR DIRECTOR

THIS YEAR HAS BEEN FULL OF GROWTH, EVOLUTION, AND POSITIVE CHANGES. NMSI SUPPORTED 30 STUDENTS FROM AROUND THE COUNTRY.

Thanks to the NMSI team, we have successfully exceeded our student placement goals despite the many fluctuations in the employment sector and NMSI internal staff transitions. We connected with over 600 students through different initiatives. Our efforts address the gap in employment readiness by targeting the learning and development of CAMP students' needs through collaborative workshops with employer relations like Toast, Kellogg's Co, and Blue Cross Blue Shield of Michigan.

Our team developed several strategies to expand new partnerships with higher education institutions to ensure the broadening of CAMP student development nationwide. Most recently, NMSI established a formal partnership with the University of New Mexico (UNM), CAMP. We are encouraging the existing 59 CAMP programs to follow the model established between UNM, CAMP, and NMSI, of successfully securing internship opportunities for UNM CAMP students.

Our CAMP students have performed well in their internship placements, increasing the demand for continued interest by employers for CAMP students. For example, our collaboration with the Office of Migrant Affairs at the Michigan Department of Health and Human Services (MDHHS) remains committed to recruiting CAMP students for the MDHHS Student Assistant Summer Internships.



Luis Alonzo Garcia
NMSI Director

The Office of Migrant Affairs is a leading state agency responsible for assessing, developing, and coordinating services for Michigan's migrant and seasonal farmworkers.

It is essential to acknowledge that this would not be possible without the participation of the many CAMP programs and the companies we are partners with, who believe in the vision of NMSI and commit to providing competitive paid opportunities for migrant and seasonal farmworkers students.

NMSI's success is partly due to the leadership of Samantha Velez, who resigned from her role this month. A new search is underway, and until the position is filled, Salvador Chavez will serve as Interim

Associate Director. Salvador will continue building and representing the mission of NMSI. Salvador is a CAMP alumnus of Michigan State University. He brings a wealth of knowledge about corporate relations and a keen understanding of the migrant and seasonal farmworker community.

We end this year with deep satisfaction from the achievements of the NMSI team and all of the accomplishments of CAMP students.

Lastly, a special thank you to CoBank, who has supported NMSI unconditionally since 2014 and continues providing professional and career opportunities to CAMP students nationwide.

CONTENTS

Words from Our Director	3
Program Statements	4
Our Story	6
Our Main Area of Expertise	8
Our Partnering Institutions	10
NMSI at a Glance	12
Annual Data Points	13
Our Student Interns	14
Our Partnering Employers	16
Our Team	18
Our Social Media	20

PROGRAM STATEMENTS



MISSION

To support College Assistance Migrant Program (CAMP) students nationwide to make internship opportunities possible

PURPOSE

To encourage and support CAMP students in finding experiential learning opportunities that will prepare them for future careers

VISION

To increase the representation of a diverse labor force in the United States



OPENING DOORS FOR MIGRANT FARMWORKER STUDENTS



OUR STORY



NMSI is financially supported by the generous contribution of CoBank

Since 2014, CoBank has generously supported NMSI and the dynamic practices that lead to the securement of internships and professional development for Migrant Seasonal Farm Worker (MSFW) students, ensuring a diverse labor force.

The National Migrant Scholars Internship Initiative advocates for adaptive hiring practices that support MSFW students who have participated in the College Assistance Migrant Program (CAMP). NMSI facilitates the connection between students and employers and provides a pool of qualified diverse candidates to employers. Additionally, NMSI identifies potential financial burdens students may encounter during their internship, eliminates them, and develops an

Employer Agreement that directly supports the student.

NMSI's focus is on three supportive areas that target financial, experiential learning, and professional development to ensure the holistic development of tomorrow's labor force.

CAMP is federally funded through the U.S. Department of Education, Office of Migrant Education. CAMP assists students who are migratory or seasonal farmworkers (or children of such workers) enrolled in their first year of undergraduate studies at an Institution of Higher Education. The funding supports the completion of the first year of studies. The program serves approximately 2,000 CAMP participants annually nationwide.



ASSISTING WITH PROFESSIONAL GROWTH FOR
CAMP STUDENTS
FINANCIAL RESOURCES, EXPERIENTIAL LEARNING, PROFESSIONAL DEVELOPMENT.



CREATING EXPERIENCES FOR STUDENTS THAT ENHANCE THE DIVERSITY IN THE LABOR FORCE OF THE UNITED STATES

INTERNSHIPS

To provide

direct access to internship opportunities by connecting NMSI participants to employers that are seeking to enhance diversity

MATCH

To facilitate

the connection between students and employers

LEARNING OUTCOME

To ensure

a learning outcome and quality internship by completing an individualize pre- and post-learning agreement with the employer and student

EQUITABLE SUPPORT

To advocate

for adaptive hiring practices that are inclusive of all students

OUR MAIN AREA OF EXPERTISE

SUPPORTING STUDENTS WITH RESOURCES TO ESTABLISH INTERNSHIP

OPPORTUNITIES

NMSI supports internships and employment opportunities for MSFW students, and ensures they have the skills and tools necessary to be more successful after they graduate. NMSI provides tailored services that facilitate equal representation in the workforce and offers professional development opportunities by enhancing professional communication in interviews, and by building high-quality resumes and cover letters.

FINANCIAL RESOURCES, EXPERIENTIAL LEARNING, PROFESSIONAL DEVELOPMENT



DEVELOPING STUDENTS INTO PROFESSIONALS

Breaking Barriers

NMSI's focus is on three supportive areas that target financial, experiential learning, and professional development. NMSI's Financial support alleviates and removes financial barriers that MSFW students face during an internship. NMSI guarantees a Learning outcome that provides hands-on experience that will ultimately support their competitiveness in the workforce upon graduation. For preparation, NMSI provides Professional Development workshops that cater to the MSFW student population.



FINANCIAL RESOURCES

A well-functioning financial support system promotes creativity, innovation, and inclusive personal growth.



EXPERIENTIAL LEARNING

Students have the opportunity to develop and apply the skills, theories and concepts learned in the classroom.



PROFESSIONAL DEVELOPMENT

Professional development is learning to maintain professional skills through formal workshops.

OUR PARTNERING INSTITUTIONS



The Western Migrant Stream

Arizona State University
 Arizona Western College
 California State University, Bakersfield
 California State University, Fresno
 California State University, Long Beach
 California State University, Monterey Bay
 California State University, Sacramento
 California State University, San Marcos
 Mendocino College
 Rancho Santiago Community College
 Reedley College
 Chemeketa Community College
 Oregon State University
 Portland Community College
 Treasure Valley Community College
 Central Washington University
 Columbia Basin College
 Eastern Washington University
 Heritage University
 University of Washington
 Washington State University
 Skagit Valley College
 Wenatchee Valley College
 West Hills Community College
 Yakima Valley College

The Central Migrant Stream

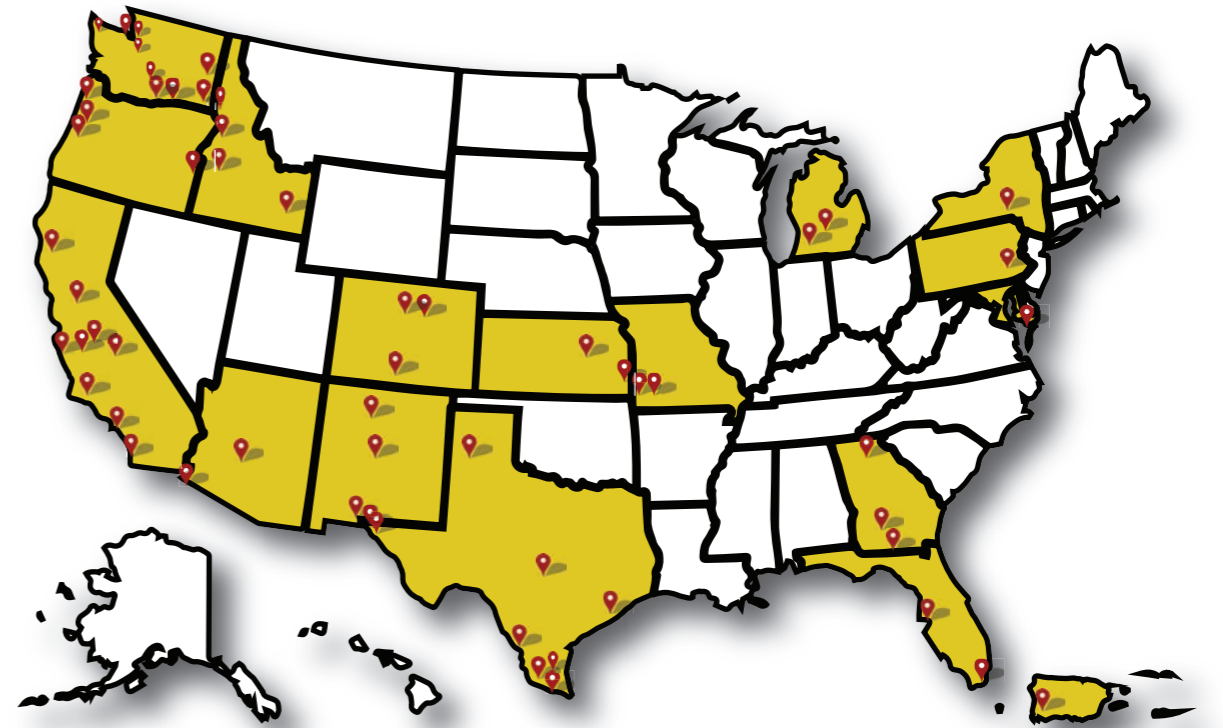
Adams State University
 Metropolitan State University of Denver
 University of Colorado Boulder
 Boise State University
 Lewis & Clark State College
 University of Idaho
 Idaho State University
 Fort Scott Community College
 Kansas State University
 University of Kansas, Heartland
 New Mexico State University
 Northern New Mexico College
 University of New Mexico
 El Paso Community College
 St. Edward's University
 Texas A&M International University
 West Texas A&M University
 University of Houston
 University of Texas at El Paso
 University of Texas Rio Grande Valley,
 Brownsville
 University of Texas Rio Grande Valley,
 Edinburg

The Eastern Migrant Stream

Miami Dade College
 University of South Florida
 Abraham Baldwin Agricultural College
 University of North Georgia
 Valdosta State University
 Salisbury University
 Michigan State University
 Western Michigan University
 Crowder College
 Drury University
 SUNY Oneonta
 Millersville University of Pennsylvania
 Inter American University of
 Puerto Rico



59 CAMP PROGRAMS IN THE UNITED STATES



The College Assistance Migrant Program (CAMP) assists students who are migratory or seasonal farmworkers (or children of such workers) enrolled in their first year of undergraduate studies at an Institute of Higher Education (IHE). The funding supports completion of the first year of studies. Competitive five-year grants for CAMP projects are made to IHEs or to nonprofit private agencies that cooperate with such institutions. The program serves approximately 2,000 CAMP participants annually.

NMSI AT A GLANCE

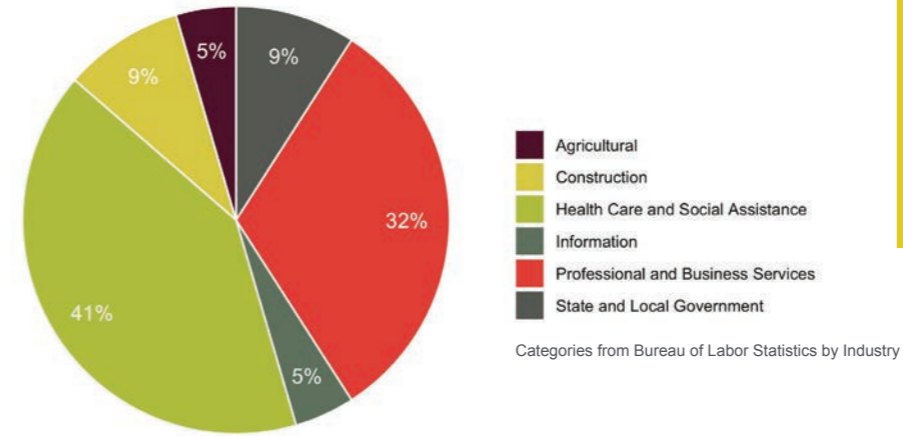
30 INTERNSHIPS IN 2022



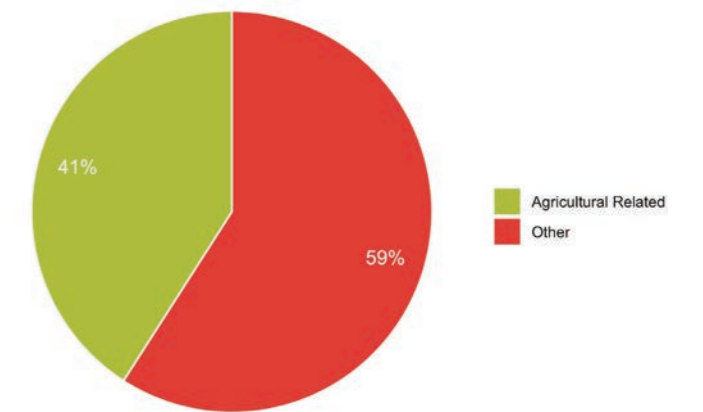
ANNUAL DATA POINTS

2022

This year, similar to national trends for the last years, we saw a large influx and need for support of students within the Health Care Industry



41%
OF NMSI INTERNSHIPS ARE
RELATED TO AGRICULTURE



200 INTERNSHIPS FROM 2015 TO 2022



450
INTERNSHIP HOURS AVERAGE
FOR CAMP STUDENTS

OUR STUDENT INTERNS



Enrique Aguilar
Washington State University
HITT Contracting



Daniela Aguilar Carranza
University of Idaho
SAF



Cesar Bedolla-Hurtado
Washington State University
Coughlin Porter Lundeen



Anel Aguilar
Michigan State University
USDA



Richard Carbajal
Michigan State University
MDOT



Selina Chacon
University of New Mexico
East San Jose Elementary



Cristo Romero
Valdosta State University
UFW Foundation



Fany Lopez
California State University, Fresno
Michigan Immigrant Rights Center



Jaqueline Cortes
Western Michigan University
MDHHS



Lucia Cruz
University of Houston
MIRC



Daniela De La Cruz
Western Michigan University
MDHHS



Tomas Ruiz
Michigan State University
GreenStone Farm Credit Services

“I WOULD LIKE TO THANK COBANK FOR SUPPORTING CAMP STUDENTS. IF IT WASN'T FOR THEM, MANY OF US WOULDN'T HAVE THE OPPORTUNITY TO BE PART OF AN INTERNSHIP SO I'M VERY THANKFUL WITH THEM AND THEIR FINANCIAL SUPPORT.”



Jose Duran
University of Idaho
SAF



Jacquelin Flores
University of South Florida
Cohen & Grieb P.A.



Hugo Ceron Sandoval
Michigan State University
PepsiCo



Joel Soto
Western Michigan University
MDHHS



Valdomero Ruiz
Western Michigan University
Farmworker Legal Services



Ashley Galaviz
University of New Mexico
Dentistry Divine Smile



Diana Hernandez
Valdosta State University
SAF



Priscilla Flores
Western Michigan University
Rehab Specialist



Rosa Villagrana
University of New Mexico
CATS

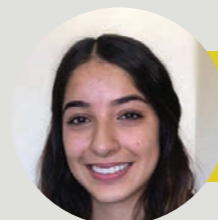
“GRACIAS POR AYUDARNOS. THANK YOU FOR HELPING US. IT'S EXTREMELY BENEFICIAL TO US ALL TO GET THIS EXPERIENCE BECAUSE IT HELPS US BETTER UNDERSTAND OURSELVES AND WHERE WE ARE ON OUR CAREER PATH. THIS SUMMER I FINALLY GOT A JOB WHERE I LOVED EVERY SECOND OF IT!”



Guadalupe Huapilla-Perez
Michigan State University
Hyatt Regency



Noemi Mendez
Western Michigan University
MDHHS



Jaqueline Palacios-Molinar
Adams State University
City of Chicago



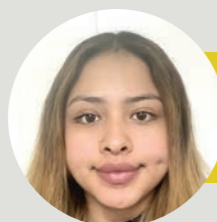
George Ramirez-Madrigal
Michigan State University
DO Congresswoman Elissa Slotkin



Isabelle Bryson
Crowder College
Missouri Attorney General's Office



Eva Ramirez
Western Michigan University
MDHHS



Mayra Reyes
University of New Mexico
Aetos Real Estate Services



Sofia Mireles-Gonzalez
Michigan State University
WKAR



Anthony Salazar
Western Michigan University
MDHHS

“NMSI HELPED ME IN WAYS I CANNOT DESCRIBE. THIS INTERNSHIP WAS ONE OF THE BIGGEST STEPS I HAVE TAKEN TO PURSUE MY CAREER GOALS AND NMSI MADE IT POSSIBLE FOR ME TO GET PAID AND GAVE ME PEOPLE TO GUIDE ME ALONG THE WAY. I WOULDN'T CHANGE ANYTHING.”

OUR PARTNERING EMPLOYERS

CONNECTING STUDENTS TO EMPLOYERS

WE DO THE RECRUITING, SO YOU DON'T HAVE TO

- NMSI facilitates the connection between students and employers
- Access to a pool of diverse student candidates to meet employers' hiring requirements
- Financial resources to offset the cost of an internship
- Supportive resources to create and maintain an inclusive and equitable work environment



FINANCIAL RESOURCES, EXPERIENTIAL LEARNING, PROFESSIONAL DEVELOPMENT



OUR TEAM



Luis Alonzo Garcia
Director



Salvador Chavez
Interim Associate Director



Zainab Ascencio
Communications and Administrative Assistant



Lupe Velasquez
Student Assistant



OPENING DOORS FOR MIGRANT FARMWORKER STUDENTS



ASSISTING WITH PROFESSIONAL GROWTH FOR
CAMP STUDENTS

FINANCIAL RESOURCES, EXPERIENTIAL LEARNING, PROFESSIONAL DEVELOPMENT.



OUR SOCIAL MEDIA

LET'S STAY CONNECTED!



@NMSI_CAMP

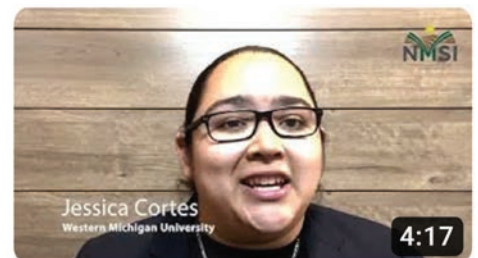


@NMSI.CAMP.INTERNSHIPS



@NMSI_CAMP

Our 2022 NMSI Interns share their internship experiences, learnings, and gratitude to CoBank



2022 NMSI Participants

Please click the above video to watch it

Holden Hall C-235
234 Wilson Rd.
East Lansing, MI 48825



Phone: (517) 432-4476
E-mail: nmsi@vps.msu.edu
Website: mss.msu.edu/nmsi